

# OAKLAND-WAWANESA MUNICIPALITY

## BY-LAW NO. 04-2020

**BEING** a By-law of the Municipality of Oakland-Wawanesa to amend the Municipality of Oakland-Wawanesa Municipal Development Plan By-law No. 04-2018, as amended.

**WHEREAS** it is necessary to pass a By-law to amend the Municipality of Oakland-Wawanesa Municipal Development Plan;

**AND WHEREAS** Section 56(1) of The Planning Act provides that a Development Plan may be amended;

**NOW THEREFORE** the Council of the Municipality of Oakland-Wawanesa enacts as follows:

1. **PART 6.0 Maps: Municipal Overview Map 1 of the Municipality of Oakland-Wawanesa Municipal Development Plan** is hereby amended as follows:


An area of land generally described as lying immediately south of the Assiniboine River and north of P.R. No. 340 more particularly described as being Pt. SW ¼ Sec. 36-8-17 located in the extreme northeast corner of the Municipality of Oakland-Wawanesa as shown outlined in a heavy broken line on the map attached hereto and marked as Schedule "A" is hereby re-designated:

**FROM: CONSERVATION AND RECREATION AREA**

**TO: AGRICULTURE GENERAL AREA**

On said Map 1.

**DONE AND PASSED** by the Council of the Municipality of Oakland-Wawanesa in meeting duly assembled at Nesbitt, Manitoba, this 19<sup>th</sup> day of January A.D. 2021.

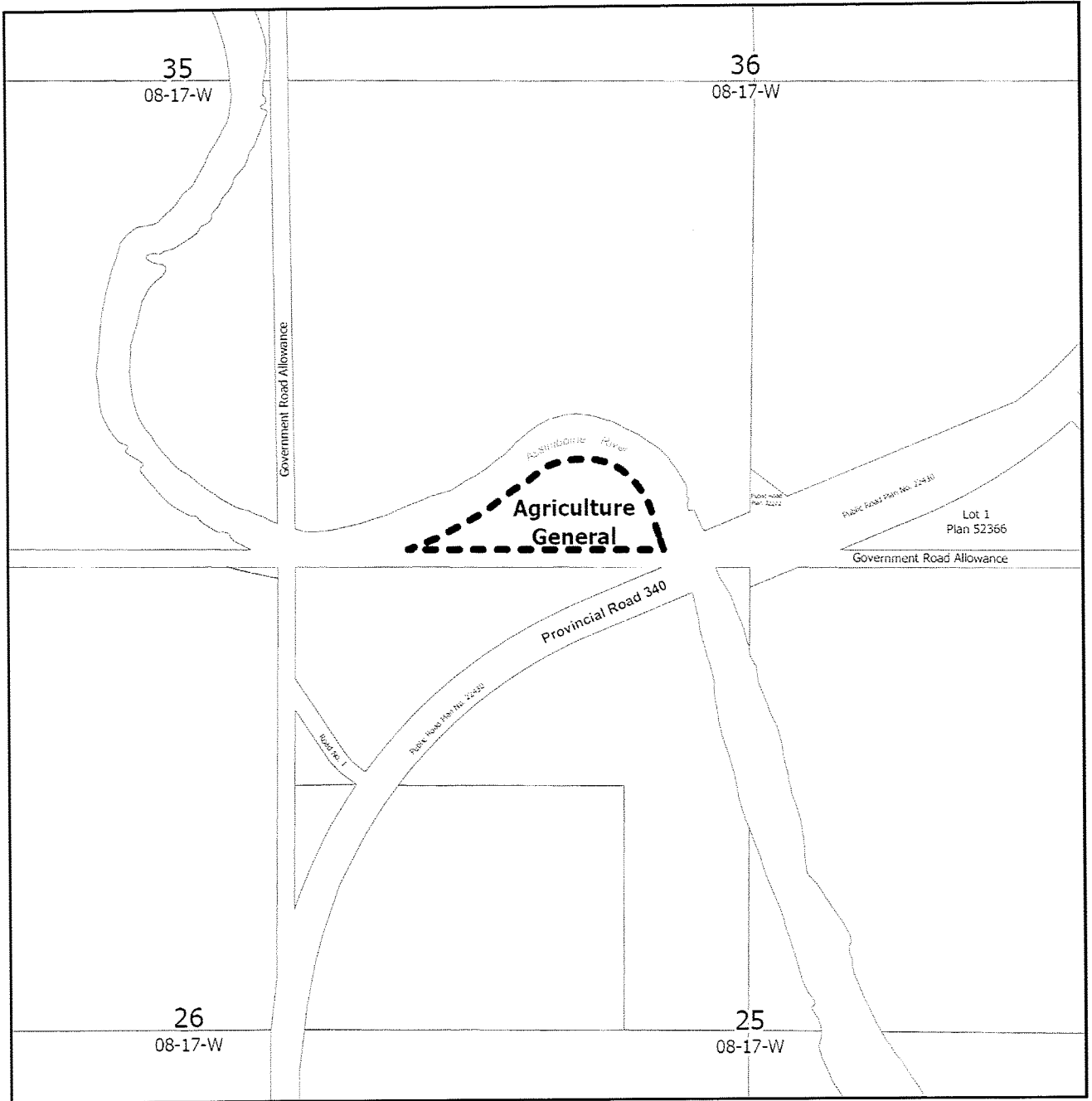
  
\_\_\_\_\_  
Head of Council

  
\_\_\_\_\_  
Chief Administrative Officer

Read a first time this 21<sup>st</sup> day of August, A.D. 2020.

Read a second time this 18<sup>th</sup> day of August, A.D. 2020.

Read a third time this 19<sup>th</sup> day of January, A.D. 2021.



## Schedule "A"

Attached to By-law No. 04-2020 of the Municipality of Oakland-Wawanesa amending Policy Map 1 of By-law 04-2018 being the Municipality of Oakland-Wawanesa Development Plan

**Pt. 36-08-17 WPM**  
**That portion which lies south of Assiniboine River**



Limit of area affected

From: Conservation and Recreation  
 To: Agriculture General



Date: 2020-06-22

**Manitoba**  
 Department of Municipal Relations  
 Community Planning